

**SIEVE SCREEN WITH AUTOMATIC CLEANING, DEWATERING AND RESUDUES
 COMPACTION SYSTEM**

For above ground installation

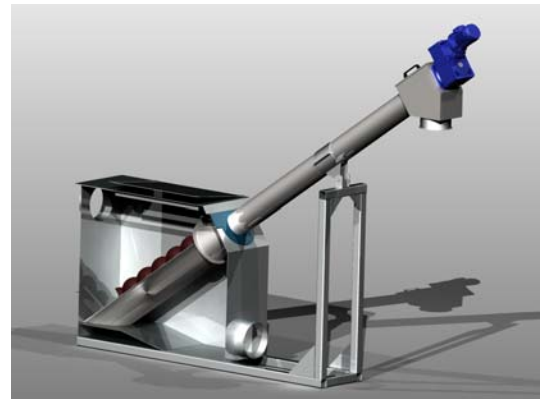
REF:TA – HEL-S

Function:

- Removal of solids of size equal to, or larger than 3 mm along with dewatering and compressing system.
- Perfect after a pumping station.

Characteristics:

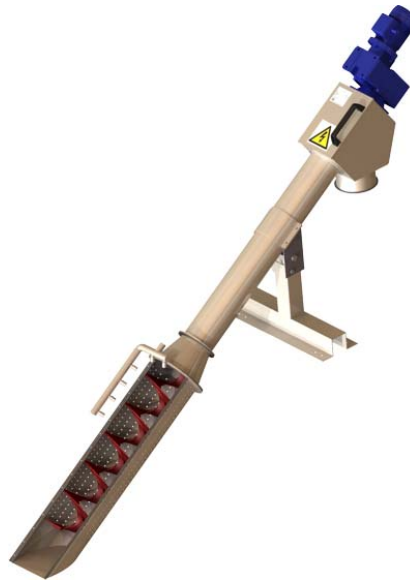
- Made of AISI 304 stainless steel, complete disassembly possible.
- Perforated stainless steel grating for small solids.
- Available screenings sizes: 3 to 10 mm.
- Screw elevator, made of AISI 304 stainless steel, working angle of 35° without central axis.
- Automatic cleaning system with brushes and pressure washing system.
- Dewatering and waste compressing system.
- Neoprene bands on both sides for better waterproofness.
- Supporting base with height and rotation system adjustment for easier operation.
- Stainless steel carcass to place above ground.



Ref.	(A) Total length [mm]	(B) Canal Height [mm]	(C) Discharge Height [mm]	(E) Sieve width [mm]	(F) Sieve area width [mm]	(G) Ø Discharge [mm]	(H) Total Height 35° [mm]	(J) Base Lenght [mm]	Power [KW]	Light [mm]
TA-HEL 200-SP	2849	500	500	300	230	165	1734	2335	0.55	03-oct
TA-HEL 200	5000	800	1400	300	230	165	2963	3712	0.55	03-oct
TA-HEL 400	5284	800	1400	450	390	269	3130	4328	1.1	03-oct

TABLE OF FLOWS

MODEL	TA-HEL 200-SP	TA-HEL 200	TA-HEL 400
SCREENINGS [mm]	MAXIMUM CLEAN WATER FLOW WITH PERFORATED PLATES [m³/h]		
3	20	40	90
4	33	65	129
5	45	80	155
6	59	99	185
10	90	115	215



SPARE PIECE FOR TA-HEL

BRUSH

REF: CEPILLOS



BRUSH

TAHEL 200-SP

TAHEL 200

TAHEL 400