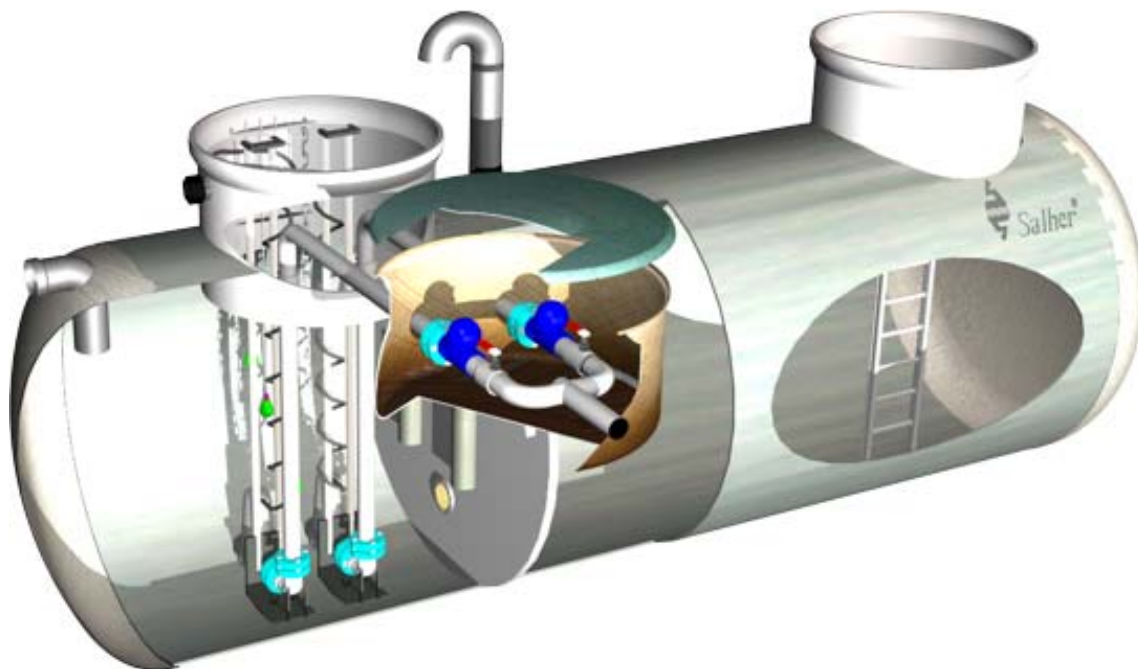


PUMPING STATION WITH 24 HOURS EMERGENCY STORAGE

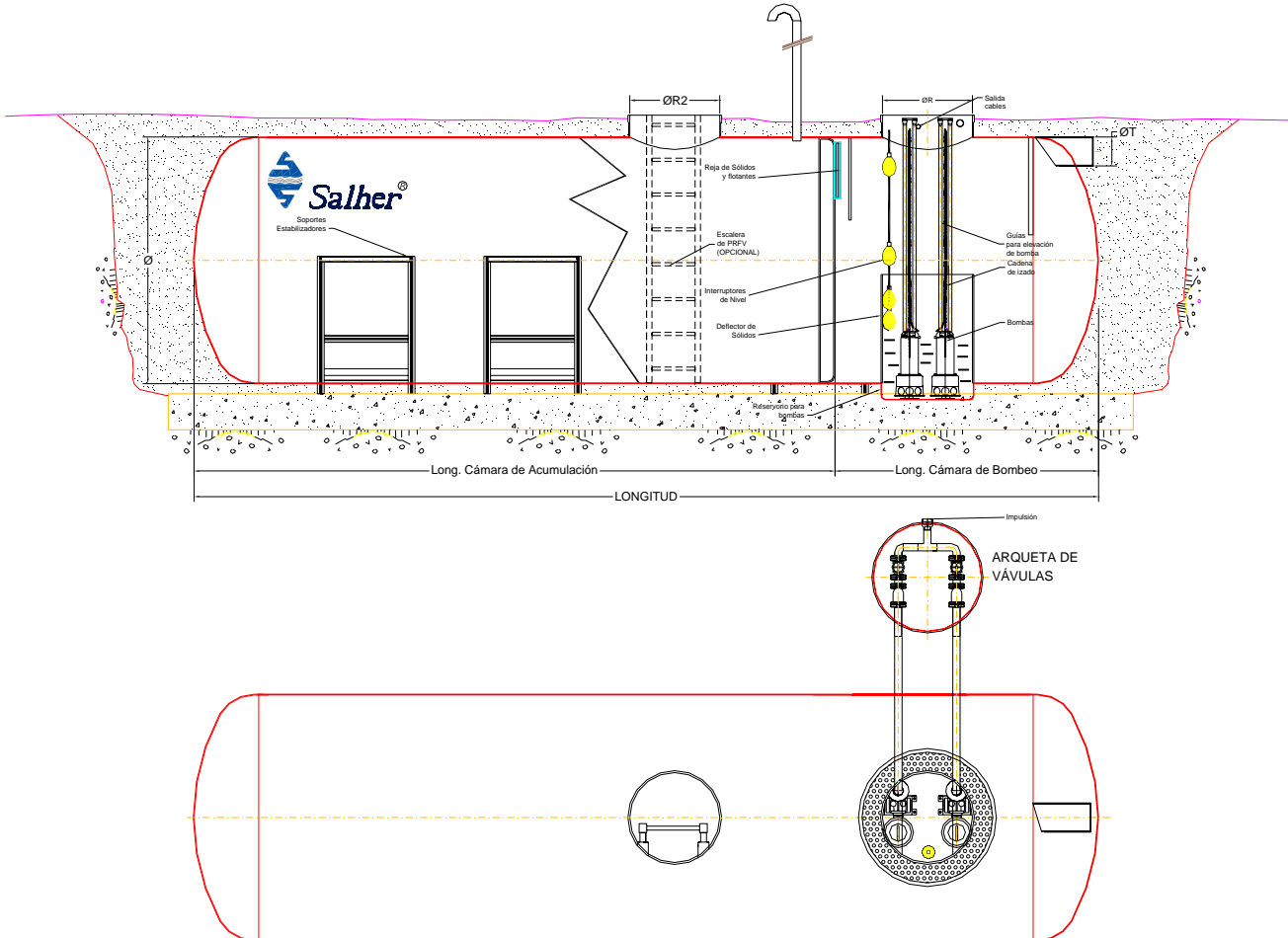
Pumping stations made by SALHER are made with:

- High capacity FGRP (Fiber Glass Reinforced Polyester) carcass to store a high flow during a long period without energy, with inlet pipe, impulse and supply point for ventilation and cable outlet.
- Submersible pumps for waste water (Vortex, mono-canal or multi-canal impulser) with way down device and automatic anchorage.
- Level measure system thanks to the level regulators or ultrasound.
- Retention valve for faecal water and lock valve. Place inside the pumping station or valves' box.
- Lock valve in case of tank's runoff
- Electrical board in metal and FGRP (Fiber Glass Reinforced Polyester) with contactors (until 5.5 CV), thermal relays, stars/triangle starter from 7.5 CV (included) on/off thermal sign,) manual/automatic's election, fuse, automatic rotation(2 pumps), visual and acoustic alarm. In option: voltmeter, ammeter, counter.
- In option: gallows for pumps extraction, independent valves' box, cast iron cover, access ladder, deodorization system and pumping station cleaning



PUMPING STATION WITH EMERGENCY STORAGE

REF: CHC-PB-AC



REFERENCE	Total Capacity [litres]	Maximal Flow [m ³ /h]	REF. PUMPS	Pumps Units/kw/ tension	Ø [mm]	Length. [mm]	Ø T [mm]
CHC-PB-AC-24	24.000	3,00	4	1,2 Kw III	2.000	5.380	110-300
CHC-PB-AC-50	50.000	6,00	5	1,3 Kw III	2.500	10.680	110-300
CHC-PB-AC-75	75.000	9,00	6	2,2 Kw III	3.000	11.200	110-300
CHC-PB-AC-100	100.000	12,50	9	2,2 kW III	3.500	11.100	110-300

Consult us for other flow or retention.