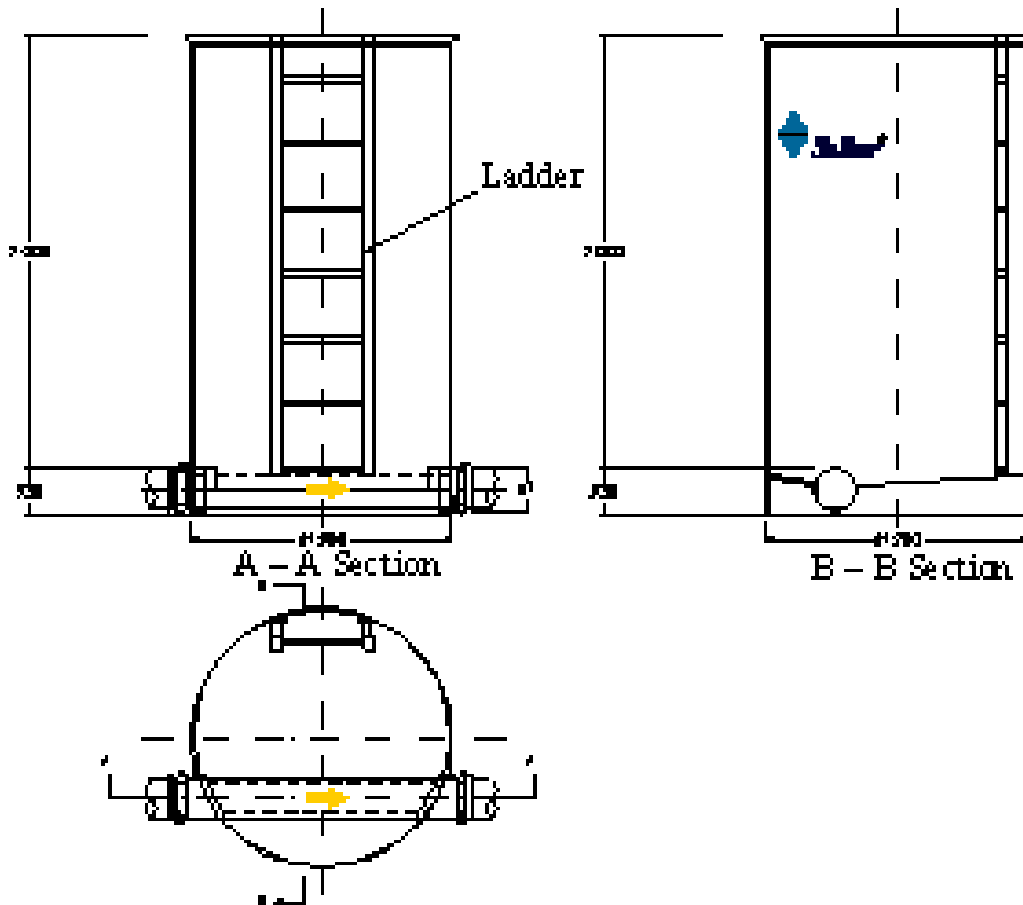


DUMPING CONTROL MANHOLE
MODEL: C.V.A-C.A.M

It is dedicated to the control and inspection of the dumping from wastewater treatment plant, hydrocarbon separators and other devices.

Sized according to Normative Local of the Community of Madrid for any industrial activity, compulsory above all discharge to the municipal network.



Ø MANHOLE	Ø PIPES	HEIGHT
1.200	200-315	1.000
1.200	200-315	1.500
1.200	200-315	2.000
1.200	200-315	2.250
1.200	200-315	2.500

INNER SIZE IN MILLIMETERS.